

TPM CIRCLE NO:	ACTIVITY	KK	QM	PM	JH	SHE	OT	DM	E&T	
TPM CIRCLE NAME:	LOSS NO. / STEP									
DEPT: Production	RESULT AREA	P	Q	DEF:- A	C	D	S	M		
CELL: A247	CELL NAME: Lever	MACHINE / STAGE: SPM					OPERATION: Drilling & Tapping			

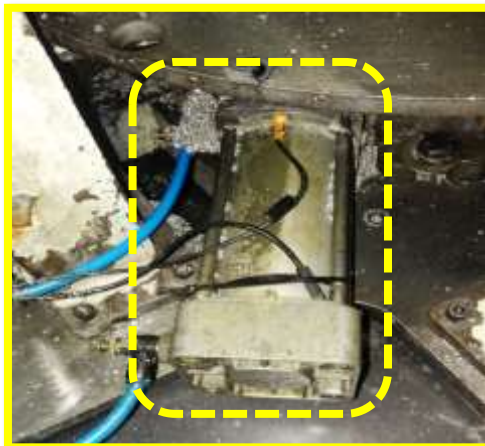
KAIZEN IDEA SHEET

F/IMS/05

KAIZEN THEME: To increase MTBF for distance sensor @ lever machining stage.

WIDELY/DEEPLY:

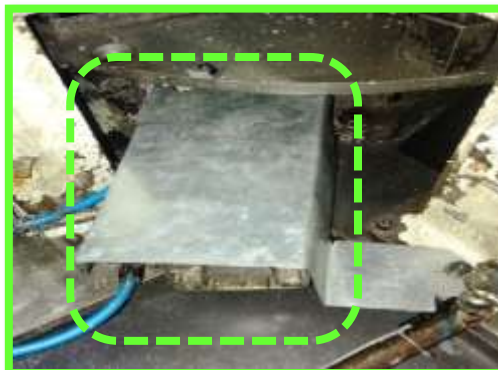
PRESENT STATUS: Current MTBF is 1 Day.



BEFORE

IDEA: Burr & Coolant should not accumulate on the sensor body.

COUNTERMEASURE : Provided a sheet metal cover on the sensor body to eliminate sensor getting disturbed frequently.



AFTER

BENCHMARK	1 Day
TARGET	30 day
KAIZEN START	15.03.2017
KAIZEN FINISH	16.03.2017

TEAM MEMBERS:

Mr. Sridhar,
Mr. Ganesh

BENEFITS:

1. Breakdown elimination.
2. Maintenance cost reduction.

KAIZEN SUSTENANCE

WHAT TO DO : Ir reversible Kaizen.

HOW TO DO : -----

FREQUENCY : One time Activity.

WHY - WHY ANALYSIS :-

Why1: Current MTBF is 24 months .

Why2: Distance sensor getting disturb.

Why3: Burr & Coolant accumulating on the sensor body.

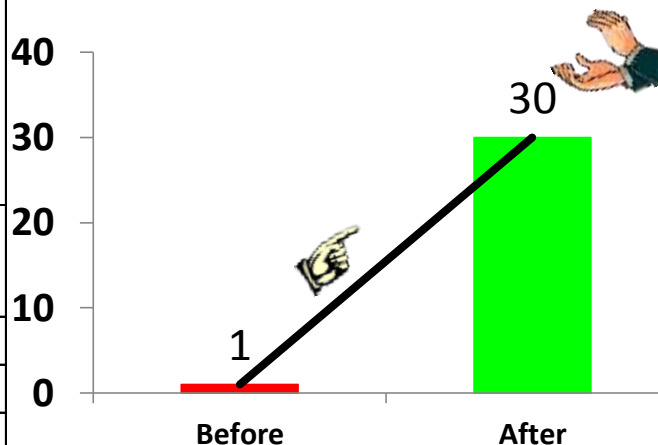
ROOT CAUSE:- Burr & Coolant accumulating on the sensor body.

REGISTRATION NO. & DATE: 1577 & 20.3.2017

REGISTERED BY: Mr. Nigamananda

MANAGER'S SIGN: Mr. Chamaraj

RESULT:- MTBF increased from 1 day to 30 days.



COST INCURRED FOR MAKING KAIZEN

MATERIAL COST IN RS	LABOUR COST IN RS	TOTAL COST IN RS
INR 100/-	-----	INR 100/-

SCOPE & PLAN FOR HORIZONTAL DEPLOYMENT

Sr. No.	CELL	TARGET	RESP.	STATUS

No Scope in P14